

## INDUSTRIAL PRODUCTS

Low Voltage Automatic Transfer Switch (LV ATS)

Medium Voltage Automatic Transfer Switch (MV ATS)

Power Distribution Switchgear (LV & MV)

Generation Switchgear (LV & MV)

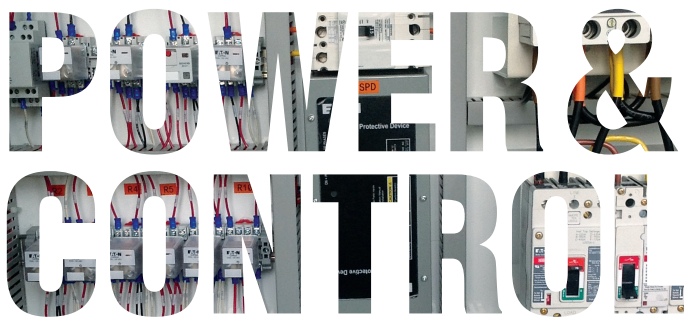
## CUSTOM PRODUCTS FOR INDUSTRIAL CONTROL

Pump Station Control Panel (Water & Sewer)

Steam Turbines Control Solutions

Small Hydraulic Turbines Control Panels

Gas Turbogenerator Control Panels



Products & Services for Industrial & Municipal Operations



**MIAMI SWITCHGEAR CO.**  
POWER AND CONTROL

## SPECIAL PRODUCTS & SERVICES

Power Plant by EPC (Engineering, Procurement & Construction)

Power Systems for Extreme Weather Conditions (PSEWC)

Power Plant & Generating Sets Retrofits

## SOLAR ENERGY EQUIPMENT

DC-AC Power Inverters

Photo Voltaic Modules

Hybrid Modules (Solar-Wind Genset)

# Industrial Products

For those cases when temporary electrical power is necessary for maintenance purposes or fails in the regular utility source, we offer low voltage and medium voltage automatic transfer switches.



## Low Voltage Automatic Transfer Switch (LV ATS)

### KEY FEATURES INCLUDE:

- From 150 to 2000 amp manufactured in wall mounted panels
- From 800 to 6300 amp manufactured in free standing panels
- Designed for services voltages from 208 VAC to 600 VAC
- NEMA 12 and NEMA 3R enclosures
- Lugs or terminals for easy connection of the power cables
- Does not require mechanical interlock
- Voltage of control 12VDC or 24VDC
- Utility three-phase sensing
- Single or three phase emergency sensing
- Weekly exerciser starts generator once a week for 30 minutes (adjustable) with/without load




## Medium Voltage Automatic Transfer Switch (MV ATS)

### KEY FEATURES INCLUDE:

- 630 amp, 1250 amp and 2500 amp of rated current
- Designed for services in all standardized medium voltages from 2.4 kV up to 34.5 kV
- Closed transition transfer by line synchronization (optional)
- With and without protection relay installed
- NEMA 12 and NEMA 3R enclosures






# Power Distribution Switchgear (LV & MV)

**WHETHER YOU NEED LOW OR MEDIUM VOLTAGE BREAKERS, WE SPECIALIZE IN PROVIDING THE SOLUTION THAT BEST FITS YOUR INDUSTRIAL ELECTRICAL POWER REQUIREMENTS, INCLUDING THESE FEATURES AND MORE:**

- Low voltage switchgear busbar up to 6000A at 1000V
- 630 amp, 1250 amp and 2500 amp of rated current (MV) up to 34.5 kV
- Designed for services in all standardized medium voltages from 2.4 kV up to 34.5 kV
- NEMA 12 and NEMA 3R enclosures (NEMA 4 & 4X on demand)
- Low and medium voltage switchgear
- Fixed or drawout circuit breaker
- Low and medium voltage motors control center
- Medium voltage disconnect switches and fuses
- Professional application engineering
- Substation equipment available

We specialize in providing solutions to your industrial electrical power requirements. We take enormous pride in assuring that all equipment is designed and built to your requirements and specifications.



## Generation Switchgear (LV & MV)

**PARALLELING SWITCHGEARS OFFER SOME OF THE MOST EFFECTIVE AND HIGHLY EFFICIENT OPTIONS FOR EMERGENCY POWER SYSTEMS. WE OFFER OUR GENERATION SWITCHGEAR, FEATURING:**

- Paralleling switchgear
- Monitoring and controlling standby
- Prime and load management systems

With multi-unit utility paralleling installations, our switchgear is engineered to manage your power system on-site or remotely.



# Custom Industrial Control Products



## Pump Station Control Panel (Water & Sewer)

Miami Switchgear is a provider of electrical control panels and start-up services for Miami-Dade County Water & Sewer Department (MDWASD).

### FABRICATION

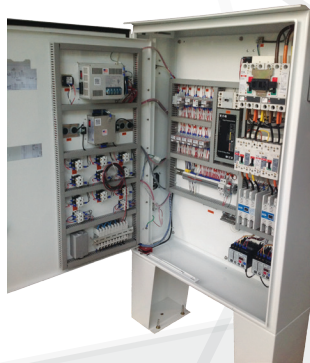
Indoor or outdoor panels, free standing or wall-mounted, NEMA 1 – NEMA 4X. Mounting panel and dead front door are fabricated of anodized aluminum.

### OPERATION

Operation of multiple electric pumps, capable of controlling the wet well level through the utilization of various brands of main controllers, back-up controllers, pressure transducers, bubbler systems and floats switches.

### EMERGENCY POWER

Services in critical moments is a must. All Miami Switchgear control panels are constructed with provision for emergency power hook-up.



## Gas Turbines, Small Hydraulic Turbines & Steam Turbine Control Solutions

Better performance throughout the steam turbine's operational life improves cost efficiency. The modern digital turbine control is designed to control the main steam flow to the steam turbine in all operational conditions.

**OUR CONTROL SYSTEMS ENSURE STABLE OPERATION THROUGHOUT ALL PHASES.**

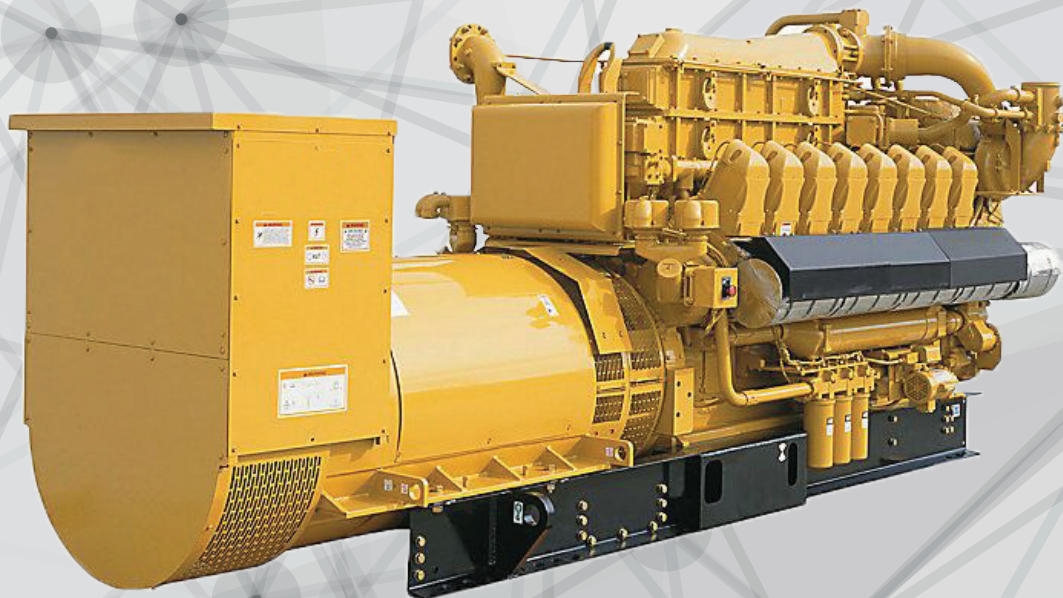
# Special Products & Services



## Power Plant by EPC (Engineering, Procurement & Construction)

**WE OFFER TOTAL ENGINEERING, PROCUREMENT AND CONSTRUCTION SERVICES FOR MECHANICAL, ELECTRICAL (POWER AND CONTROL), AND CIVIL PROJECTS INCLUDING:**

- Power plant in low and medium voltage up to 13.2 kV
- Up to 20 mw
- Fuel oil #2 (diesel), fuel oil #6 bunker and natural gas
- Piston, turbines and hydraulics primary engine
- Power plants for operation: load base, prime or standby



# Power Systems for Extreme Weather Conditions (PSEWC)

## OUR ELECTRIC HOUSE (E-HOUSE OR POWERHOUSE) FEATURES INCLUDE:



- Voltage level up to 69 kV
- Stainless steel construction
- NEMA 3R; 4 & 4x compliance
- Relative humidity: 100%
- No modular construction (anti-seismic; can withstand wind speeds exceeding 200km/hour)
- They may contain: switchboard of power, distribution, generation and maneuvers, power transformers (up to 10 MVA) or generator sets (up to 5,000 kVA)
- Control system and remote monitoring with integrated alternative energy as internal services power sources



## Power Plant & Generating Sets Retrofits

We specialize in the design and construction of power plants, reciprocating engines and retrofitting and upgrading of gas and steam turbines.

### OUR TECHNICAL TEAM HAS WORKED ON APPLICATIONS SUCH AS:

- Large generator sets (turbines and reciprocating engines)
- Synchronizing and paralleling operations
- Engine control and power plant control

We are authorized distributors of brands including **Eaton** (power in medium and low voltage), **Woodward** (controllers for engines and turbines), **Toshiba** (PLC and frequency driver) and **SEL** (protection relays).



# Solar Energy Equipment



## DC-AC On Grid Power Inverters

**INCLUDES HEX POWER BRAND FROM SOUTH KOREA FROM 3.3KVA TO 1 MVA.**

- Control maximum power point tracking
- Ensures high efficiency
- Easy to operate in parallel
- Supports system monitoring and self-diagnostic features

## Photo-Voltaic Modules

**INCLUDES LS AND CSUN BRANDS FROM SOUTH KOREA AND CHINA.**

- Cell type: mono-crystalline and poly-crystalline
- Nominal power ( $P_{max}$ )  $W_p$ : 250 to 310 watts
- Output voltage: 31.5 VDC (average)
- Module efficiency: over 16.75%
- Current at maximum power: 8.56 amp
- Includes mounting rack and supports

## Hybrid Modules (Solar-Wind-Genset)

**SERIES SEHS IS AN AC ENERGY SUPPLY SYSTEM FOR STANDALONE CRITICAL LOADS. THE SYSTEM IS COMPOSED OF:**

- Photovoltaic modules (8 to 40 kw)
- Battery bank (from 100 to 400 A/H)
- DC-AC power inverter (8 kw, 12.5 kw and 20 kw)
- Battery charger by 20 A, 30 A and 50 A
- Diesel genset (8 kw, 15 kw and 30 kw)
- Maximum nominal power: 8 kW, 12.5 kW and 20 kW
- Nominal voltages: 120/208 VAC 60 Hz or 230/380 VAC 50 Hz





**MIAMI SWITCHGEAR CO.**  
POWER AND CONTROL

**READY FOR EFFICIENCY OUT OF YOUR ELECTRICAL CONTROL  
AND POWER SOLUTIONS, AND SUPPORT YOU CAN COUNT ON?**

# Contact Us to Learn More

## CALL

**Tel.** 786-336-5783  
**Fax.** 786-336-5792

## VISIT

7060 NW 52nd Street  
Miami, FL 33166

**[info@miamiswitchgear.com](mailto:info@miamiswitchgear.com)**  
**[www.miamiswitchgear.com](http://www.miamiswitchgear.com)**



**EAT•N**



**ABB**



**TOSHIBA**

**LS**



DeepSea®

 **HEX POWER SYSTEM**

**MB**

